

A wide-angle photograph of the Cliffs of Moher in Ireland, showing the rugged, layered rock formations meeting the Atlantic Ocean under a blue sky with scattered clouds. The cliffs are topped with green grass and some small structures. The water is a deep blue-green, with white foam from waves crashing against the base of the cliffs.

Annual Visitor Attractions Survey

Analysis of 2019 - 2021 Performance and 2021 Attendances

Method

Background

Due to the impact of the Covid-19 pandemic, Fáilte Ireland postponed the 2020 wave of the annual visitor attractions survey, instead running a combined 2020 and 2021 visitor survey starting in February 2022.

By this time, pandemic restrictions had lifted, and many attractions which had been closed had re-opened.

The survey was conducted in two phases, with attractions usually open year-round contacted in March, and more seasonal attractions contacted in April.

SRI conducted the research on Fáilte Ireland's behalf. An email with an online questionnaire was sent out to 423 visitor attractions in the Republic of Ireland, informing them of the survey and how to participate.

These were followed by telephone calls to non-responders, and further targeted reminder contact from Fáilte Ireland.

OPW figures (95 attractions) were collated separately.

Multiple response methods

We have collected data through multiple channels:

- Online survey (115 attractions)
- Telephone survey (134 attractions)
- OPW (95 attractions)
- Spreadsheet for other groups /late responses (28 attractions)
- Email (3 attractions)

A total of 375 attractions responded from a population of 521 (72% response).

Brand Experiences

Brand Experiences are classed together as they have the commonality of often having an interactive element for visitors, based on watching people at work, and potentially undertaking that work or consuming it. They generally have an exploitable brand, together with a strong retail component, examples of Brand Experiences are Breweries & Distilleries, Craft Experiences, Food Experiences, Music Experiences and Sports Experiences.

Analysis of 2019 - 2021 Performance



Sample Make-up by Attraction Type

Eight attraction categories

Attractions have been categorised by Fáilte Ireland into 8 types. The category an attraction falls into may change year-on-year as attractions modify their offering.

Historic Sites are the largest category by some margin, with more than a third of all attractions surveyed falling into this category (37%). The response to the survey by attraction category closely matches the overall population.

Regional variations

Ireland's Ancient East has the highest proportion of historic sites of any region (46%), while Museums/Galleries continue to form the largest category in Dublin (42% of attractions).

A quarter of the attractions in Ireland's Hidden Heartlands are visitor/heritage centres (25%).

Response by type of attraction



Overall Visitor Figures

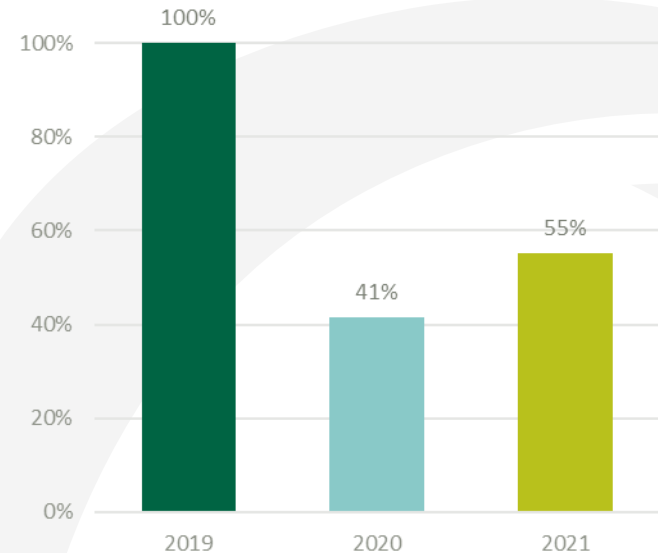
The Impact of the Pandemic

This chart shows the percentage change in the number of visitors to attractions which provided their visitor figures for 2019, 2020 and 2021, indexed to 2019.*

When comparing data from these 199 attractions, visitor numbers in 2020 were a drop of 59% of the figure recorded in 2019.

The number of visitors in 2021 increased from 2020 levels, but were still a drop of 45% on 2019 numbers.

Visitors by year as a % of 2019
(3 year cohort)

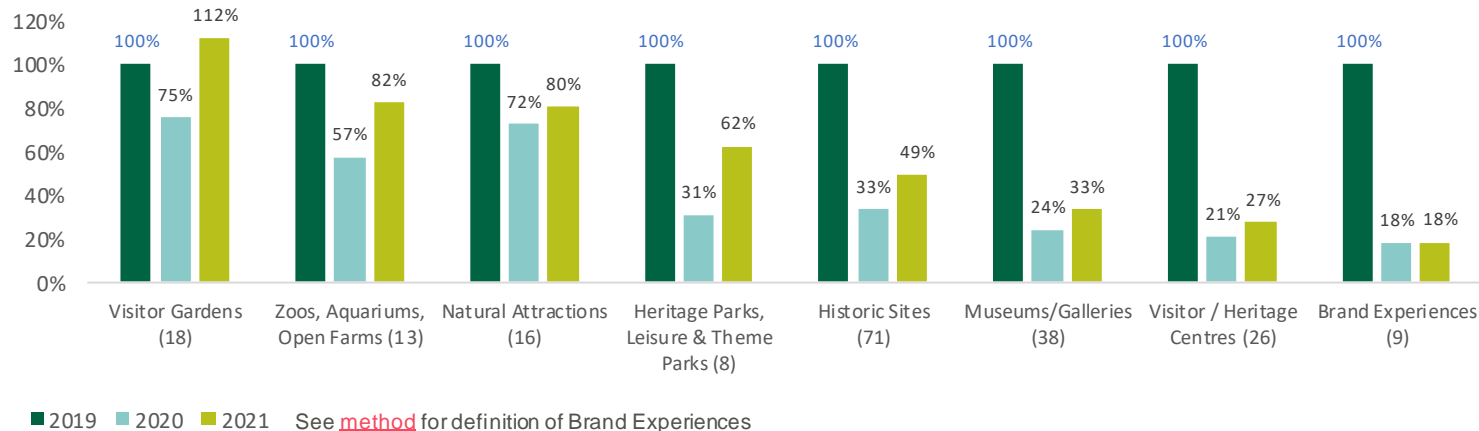


Base: 199

* Excludes outliers

Year on Year by Attraction Type

Visitor Figures as a % of 2019



* Excludes outliers

Some attraction types were affected more than others

All attraction categories experienced an initial drop in visitor numbers in 2020, but some types of attractions faced larger reductions than others.

Attractions which tend to have outdoor spaces – Visitor gardens; zoos, aquariums and open farms; and natural attractions – experienced smaller decreases in visitors.

For visitor gardens, attendances rebounded to 12%pts higher in 2021 when compared to 2019 figures.

Museums/galleries; visitor/heritage centres; and brand experiences experienced the greatest falls in visitors in 2020, and generally had smaller gains in 2021. This is no doubt a reflection of the impact of COVID-restrictions such as social distancing and later opening dates.

Opening Dates - 2020

Openings affected by lockdown restrictions

Overall, 79% of attractions were open in 2020. Of those, attractions were most commonly open for half the year (21%). Around half (48%) were open between 5 and 7 months, with three quarters (75%) open between 3 and 9 months.

Almost 1 in 10 (8%) were open year-round.

Differences by attraction type and region

While some had small sample sizes, the attractions that were most likely to be open during 2020 were:

- Museums/Galleries (56 of 60)
- Visitor Gardens (29 of 32)
- Natural attractions (21 of 23)

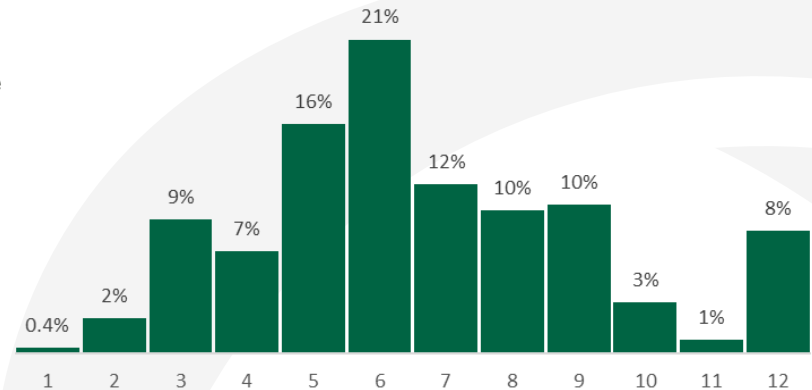
Meanwhile, the categories least likely to be open were:

- Visitor/heritage centres (32 of 49)
- Brand Experiences (20 of 30)

When examined by brand region, Dublin was the area that had the highest proportion of attractions open in 2020 (47 of 54). Ireland's Hidden Heartlands had the lowest proportion, with 28 of 40 open at some point in 2020.

Ireland's Hidden Heartlands had the highest proportion of visitor/heritage centres, which were the most likely attraction type to close, while Dublin had the highest proportion of museums/galleries (the most likely to be open).

Months Open 2020



Base: 210

Opening Dates - 2021



Openings affected by lockdown restrictions

Overall, 85% of attractions opened in 2021.

The majority of attractions which opened at some point during the year were closed from January to March.

Openings began to ramp up from April, coinciding with the initial easing of Level 5 restrictions on certain visitor attractions from April 26th and further easing through May and June.

From July, the percentage open in these months was similar to 2019.

Differences by attraction type and region

In 2021 there was less variation in the proportions of open attractions by category and brand region when compared to 2020.

Ireland's Ancient East had the highest proportion of open attractions (87%), with similar numbers in Dublin (84%), Ireland's Hidden Heartlands (83%) and Wild Atlantic Way (83%).

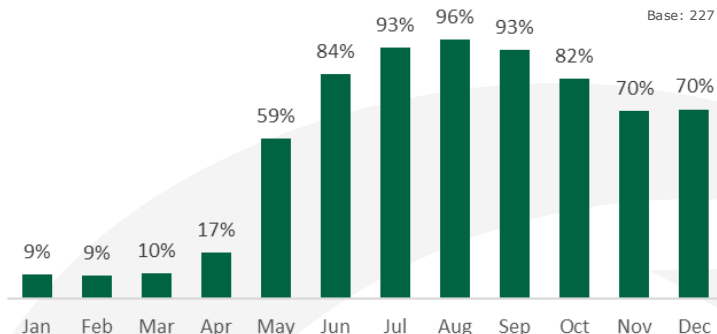
By category, the only attraction type less likely to be open was brand experiences (21 of 30)

Free vs Fee charging

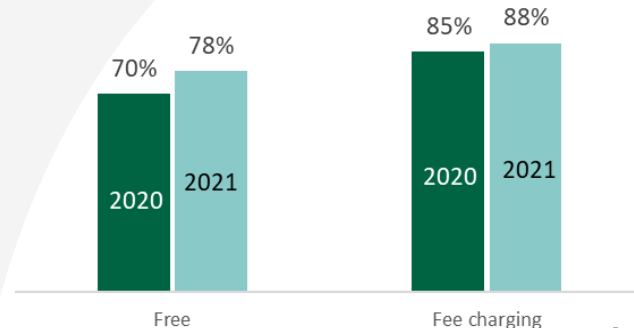
Both free and fee charging attractions saw increases in the numbers opening in 2021.

In both years, more fee charging attractions were open compared to free attractions.

% of attractions open each month in 2021



Open Attractions - 2020-2021



Visitor Origin

Republic of Ireland visitors dominated during the pandemic

Where attractions recorded visitor origin, in 2021 more than four fifths (83%) of visitors were from the Republic of Ireland.

Dublin had the greatest share of international visitors, with nearly two fifths (38%) of their visitors being from outside the Republic of Ireland.

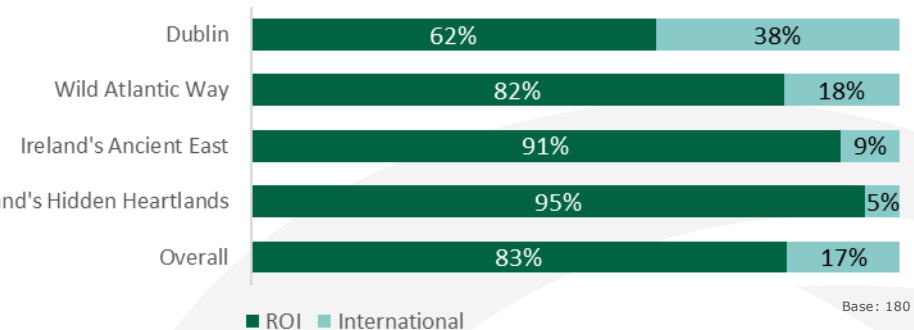
In contrast, 1 in 20 visitors (5%) to Ireland's Hidden Heartlands were of international origin.

Little change in visitor origin from 2020 to 2021

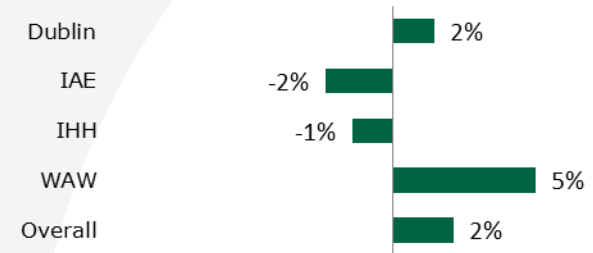
Of the cohort of attractions that provided visitor origin information in both 2020 and 2021, there was very little change year on year.

Republic of Ireland visitors slightly increased their share over international visitors in 2021 (by 2%pts). The greatest swing towards Republic of Ireland visitors was in Wild Atlantic Way (5%pts). Meanwhile, international visitors increased their share of overall visitors slightly in Ireland's Ancient East (2%pts) and Ireland's Hidden Heartlands (1%pt)

2021 Make-up of Visitors by Origin



% change in the proportion of ROI visitors by attraction region (2020-21 cohort)



Recording Visitor Numbers

Half recorded visitor numbers through ticket sales

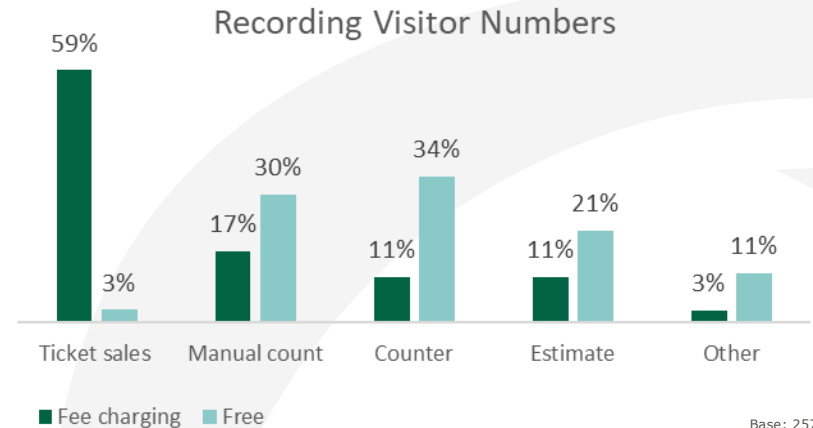
Ticket sales was the most common method of recording visitor numbers (44%).

However, the majority of these were through fee charging attractions (59%). Only 3% of free attractions used this approach to record attendances.

Broadly similar proportions of free attractions recorded their visitor numbers via a mechanical or electronic counter (34%), a manual count (30%), or using estimates (21%).

Of the 45 attractions which used a counter to record their visitor numbers...:

- 22 were in the entrance to the general attraction
- 14 were in the entrance to the wider attraction
- 8 were in the entrance to the specific attraction



Base: 257

Booking Online



Online bookings are up

60% of attractions offered online booking at some point during 2021. Among the cohort that responded in both 2019 and 2021, there has been an 11%pt increase in the number of attractions offering online booking.

More than four fifths of heritage parks, leisure & theme parks (89%) and zoos, aquariums and open farms (83%) have online booking, compared to less than half of visitor gardens (48%) and natural attractions (38%).

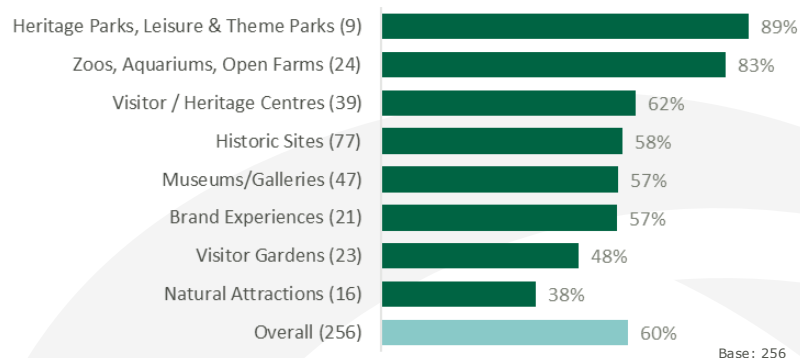
While online booking has increased for both fee charging and free attractions, free attractions previously had lower rates of online booking and saw a greater increase (from 14% to 35%).

Increasing numbers of bookings made online

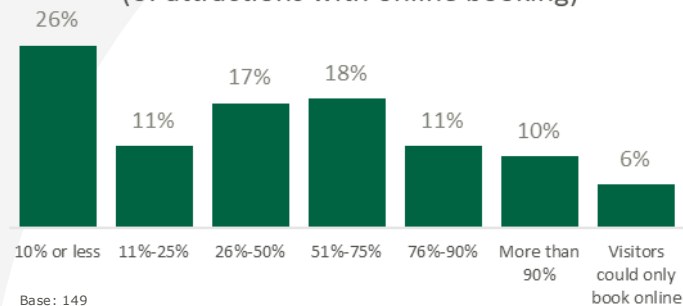
The proportion of bookings being made online has also increased. Almost half of attractions (46%) with online bookings had 50% or more of their bookings made online.

Among the cohort responding in both 2019 and 2021, the median response in 2019 was that 10% or less of bookings online, while in 2021 the median is 26-50%. The proportion of online-only bookings has doubled, from 3% in 2019 to 6% in 2022.

% of attractions offering online booking



% of bookings made online (of attractions with online booking)



2021 Attendances by County



2021 Attendances by County

Introduction

The following pages provide a record of Attendances at Visitor Attractions in 2021. Covid-19 restrictions were still in place, particularly in the first six months of the year. As outlined in the previous sections, many attractions opened later than normal.

- Attractions with an indoor element were particularly affected by social distancing guidelines which restricted numbers.

- Outdoor attractions were popular as they were not subject to such restrictions and were able to open earlier than those with an indoor element.
- Attractions which hold a particular appeal for overseas tourists were impacted by the restrictions on international travel.

As a result, performance of attractions are not comparable with previous years.

CARLOW

Attraction	2021	Category	Type of admission	No. of months open in 2021
Altamont Gardens*	108,962	Visitor Gardens	Free	n/a
Carlow County Museum	1,500	Museums/Galleries	Free	7
Delta Sensory Gardens	15,077	Visitor Gardens	Fee charging	9
Huntington Castle Gardens	12,000	Visitor Gardens	Fee charging	8
Tullow Museum	342	Museums/Galleries	Free	8

CAVAN

Attraction	2021	Category	Type of admission	No. of months open in 2021
Belturbet Station	500	Museums/Galleries	Fee charging	8
Cavan County Museum	10,000	Museums/Galleries	Fee charging	8
Corravahan House & Gardens	20	Visitor Gardens	Fee charging	2
Dun na Ri Forest Park	300	Natural Attractions	Free	3

2021 Attendances by County

CLARE

Attraction	2021	Category	Type of admission	No. of months open in 2021
Aillwee Burren Experience	72,013	Natural Attractions	Fee charging	8
Bunratty Castle & Folk Park	157,148	Heritage Parks, Leisure & Theme Parks	Fee charging	n/a
Caher Bridge Gardens	600	Visitor Gardens	Fee charging	4
Cliffs of Moher Visitor Experience	333,041	Natural Attractions	Fee charging	12
Craggaunowen - The Living Past	11,247	Heritage Parks, Leisure & Theme Parks	Fee charging	7
Doolin Cave	10,700	Natural Attractions	Fee charging	8
Ennis Friary*	6,058	Historic Sites	Fee charging	n/a
Michael Cusack Centre	2,000	Visitor / Heritage Centres	Fee charging	12
Scattery Island*	6,104	Historic Sites	Free	n/a
The Burren Perfumery	40,000	Brand Experiences	Free	8
Vandeleur Walled Gardens	20,500	Visitor Gardens	Free	9

2021 Attendances by County



CORK

Attraction	2021	Category	Type of admission	No. of months open in 2021
Allihies Copper Mine Museum	20,000	Museums/Galleries	Fee charging	6
Bamboo Park	5,117	Visitor Gardens	Fee charging	7
Blarney Castle & Gardens	85,000	Historic Sites	Fee charging	12
Charles Fort*	73,363	Historic Sites	Fee charging	n/a
Clonakilty Black Pudding Visitor Centre	4,112	Visitor / Heritage Centres	Fee charging	7
Cobh - The Queenstown Story	8,803	Visitor / Heritage Centres	Fee charging	6
Cork Butter Museum	4,223	Museums/Galleries	Fee charging	8
Cork City Gaol	17,000	Historic Sites	Fee charging	7
Cork Public Museum	14,777	Museums/Galleries	Free	8
Cork Vision Centre @St Peter's	21,278	Visitor / Heritage Centres	Free	7
Crawford Art Gallery	128,405	Museums/Galleries	Free	8
Doneraile Park*	490,000	Natural Attractions	Free	n/a
Elizabeth Fort	24,464	Historic Sites	Free	9
Fota Arboretum & Gardens*	155,111	Visitor Gardens	Free	n/a
Fota Wildlife Park	474,994	Zoos, Aquariums, Open Farms	Fee charging	8
Garnish Island*	53,120	Visitor Gardens	Fee charging	n/a
Jameson Distillery Midleton	13,500	Brand Experiences	Fee charging	6
Kinsale Mead Co.	1,100	Brand Experiences	Fee charging	5
Michael Collins Centre Castlevew	2,542	Visitor / Heritage Centres	Fee charging	7
Michael Collins House	8,000	Visitor / Heritage Centres	Fee charging	8
Nano Nagle Place	55,600	Historic Sites	Fee charging	8
Old Cork Waterworks Experience	12,000	Visitor / Heritage Centres	Fee charging	8
Old Head of Kinsale Signal Tower	6,074	Historic Sites	Fee charging	6
Shandon Tower & Bells & Tower St Anne's Church	7,000	Historic Sites	Fee charging	8
Spike Island	51,000	Historic Sites	Fee charging	5
The Donkey Sanctuary	1,500	Zoos, Aquariums, Open Farms	Free	2
The Glucksman, University College Cork	28,000	Museums/Galleries	Free	8
The Titanic Experience	35,000	Historic Sites	Fee charging	7
Toy Soldier Factory Visitor Centre	5,000	Brand Experiences	Free	7
West Cork Model Railway Village	49,806	Heritage Parks, Leisure & Theme Parks	Fee charging	9
Youghal Clockgate Tower	108	Historic Sites	Fee charging	2

2021 Attendances by County

DONEGAL

Attraction	2021	Category	Type of admission	No. of months open in 2021
Ardara Heritage Centre	6,000	Visitor / Heritage Centres	Free	6
Campview Farm	500	Zoos, Aquariums, Open Farms	Fee charging	7
Doagh Visitor Centre	25,000	Visitor / Heritage Centres	Fee charging	2
Doe Castle*	28,097	Historic Sites	Free	n/a
Donegal Castle*	15,645	Historic Sites	Fee charging	n/a
Donegal County Museum	2,878	Museums/Galleries	Free	8
Donegal Craft Village	20,000	Brand Experiences	Free	6
Donegal Railway Heritage Centre	5,000	Visitor / Heritage Centres	Fee charging	9
Fanad	64,529	Historic Sites	Free	n/a
Fort Dunree Military Museum	7,882	Historic Sites	Fee charging	5
Glebe House and Gallery*	18,491	Museums/Galleries	Fee charging	n/a
Glencolumbkille Folk Village Museum & Heritage Ctr.	32,500	Visitor / Heritage Centres	Fee charging	5
Grianan of Aileach*	7,646	Historic Sites	Free	n/a
Inishowen Maritime Museum and Planetarium	1,586	Museums/Galleries	Fee charging	4
Ionad Cois Locha	8,000	Heritage Parks, Leisure & Theme Parks	Fee charging	3
IOSAS - Celtic Gardens	20,000	Visitor Gardens	Free	12
Lifford Old Courthouse	323	Visitor / Heritage Centres	Fee charging	4
Lurgybrack Open Farm	20,000	Zoos, Aquariums, Open Farms	Fee charging	3
Malin Head	92,924	Natural Attractions	Free	n/a
Oakfield Park	49,000	Visitor Gardens	Fee charging	6
Sliabh Liag Cliffs	167,528	Natural Attractions	Free	n/a

2021 Attendances by County



DUBLIN (1 of 2)

Attraction	2021	Category	Type of admission	No. of months open in 2021
14 Henrietta Street	4,800	Historic Sites	Fee charging	8
Airfield Estate	148,182	Zoos, Aquariums, Open Farms	Fee charging	10
Arbour Hill Cemetery*	72,928	Historic Sites	Free	n/a
Ardgillan Castle	2,000	Historic Sites	Fee charging	12
Book of Kells	166,555	Museums/Galleries	Fee charging	8
Chester Beatty Library	165,042	Museums/Galleries	Free	8
Christ Church Cathedral	35,818	Historic Sites	Fee charging	8
Clondalkin Round Tower	93,313	Historic Sites	Free	8
Custom House*	2,495	Museums/Galleries	Fee charging	n/a
Dalkey Castle & Heritage Centre	3,619	Historic Sites	Fee charging	6
Dublin Castle*	229,310	Historic Sites	Fee charging	n/a
Dublin City Gallery The Hugh Lane	50,531	Museums/Galleries	Free	8
Dublin Zoo	977,597	Zoos, Aquariums, Open Farms	Fee charging	9
Dublinia	21,000	Heritage Parks, Leisure & Theme Parks	Fee charging	7
EPIC The Irish Emigration Museum	89,351	Museums/Galleries	Fee charging	8
Farmleigh Estate*	359,174	Natural Attractions	Free	n/a
Freemasons' Hall Museum	500	Museums/Galleries	Free	5
Gallery of Photography	2,520	Museums/Galleries	Free	7
Grangegorman Military Cemetery*	24,717	Historic Sites	Free	n/a
Guinness Storehouse	236,352	Brand Experiences	Fee charging	6
Irish Architectural Archive	1,656	Museums/Galleries	Free	6
Irish Museum of Modern Art	282,073	Museums/Galleries	Free	8
Irish National War Memorial Gardens	694,478	Visitor Gardens	Free	n/a
Jameson Distillery Bow St.	42,000	Brand Experiences	Fee charging	6
Jeanie Johnston Tall Ship/Famine Museum	6,520	Historic Sites	Fee charging	7
Kilmainham Gaol*	37,049	Historic Sites	Fee charging	n/a

2021 Attendances by County



DUBLIN (2 of 2)

Attraction	2021	Category	Type of admission	No. of months open in 2021
Marsh's Library	7,399	Museums/Galleries	Fee charging	8
MoLI Museum of Literature Ireland	14,083	Museums/Galleries	Fee charging	8
National Botanic Gardens*	640,000	Zoos, Aquariums, Open Farms	Free	n/a
National Gallery of Ireland	252,602	Museums/Galleries	Free	8
National Museum of Ireland - Archaeology	90,430	Museums/Galleries	Free	n/a
National Museum of Ireland - Decorative Arts & History	101,165	Museums/Galleries	Free	n/a
National Museum of Ireland - Natural History	9,416	Museums/Galleries	Free	n/a
National Print Museum	20,309	Museums/Galleries	Free	8
Pearse Museum*	27,550	Museums/Galleries	Free	n/a
Phoenix Park Visitor Centre*	1,805,660	Visitor / Heritage Centres	Free	n/a
Rascals	673	Brand Experiences	Fee charging	8
Rathfarnham Castle*	4,552	Historic Sites	Fee charging	n/a
Skerries Mills	75,300	Historic Sites	Fee charging	6
St Patrick's Cathedral	74,457	Historic Sites	Fee charging	8
The GAA Museum & Croke Park Stadium Tour	22,000	Museums/Galleries	Fee charging	8
The Little Museum of Dublin	20,330	Museums/Galleries	Fee charging	8
The National Leprechaun Museum	9,621	Museums/Galleries	Fee charging	7
The National Library of Ireland	32,863	Museums/Galleries	Free	8

2021 Attendances by County

GALWAY

Attraction	2021	Category	Type of admission	No. of months open in 2021
Aran Goats Farm	7,000	Brand Experiences	Free	4
Athenry Castle*	10,156	Historic Sites	Fee charging	n/a
Aughnanure Castle*	13,961	Historic Sites	Fee charging	n/a
Brigit's Garden	16,707	Visitor Gardens	Fee charging	8
Connemara Celtic Crystal Visitor Centre	700	Brand Experiences	Free	3
Connemara National Park	153,445	Natural Attractions	Free	11
Connemara Oyster Farm	820	Zoos, Aquariums, Open Farms	Fee charging	4
Connemara Smokehouse	700	Brand Experiences	Free	5
Dún Aonghasa*	83,892	Historic Sites	Fee charging	n/a
Dunguaire Castle	6,409	Historic Sites	Fee charging	7
Galway Atlantaquaria	92,237	Zoos, Aquariums, Open Farms	Fee charging	8
Hall of the Red Earl	6,000	Historic Sites	Free	8
Irish Workhouse Centre	3,000	Historic Sites	Fee charging	5
Killary Sheep Farm	1,500	Zoos, Aquariums, Open Farms	Fee charging	3
Kylemore Abbey & Garden	141,666	Historic Sites	Fee charging	7
Lettermullen Seaweed Centre/Heritage Centre	1,000	Visitor / Heritage Centres	Free	3
Oceans Alive Visitor Centre	200	Visitor / Heritage Centres	Fee charging	2
Patrick Pearse's Cottage*	11,075	Historic Sites	Fee charging	n/a
Portumna Castle*	40,919	Historic Sites	Fee charging	n/a
The Sheep & Wool Centre	25,000	Visitor / Heritage Centres	Fee charging	5
Turoe Pet Farm and Leisure Park	61,784	Zoos, Aquariums, Open Farms	Fee charging	4

2021 Attendances by County

KERRY

Attraction	2021	Category	Type of admission	No. of months open in 2021
Ardfert Cathedral*	8,594	Historic Sites	Fee charging	n/a
Blasket Island*	8,137	Natural Attractions	Free	n/a
Blasket Visitor Centre*	11,067	Visitor / Heritage Centres	Fee charging	n/a
Bromore Cliffs	7,000	Natural Attractions	Fee charging	7
Crag Cave	21,000	Natural Attractions	Fee charging	7
Derreen Garden	24,500	Visitor Gardens	Fee charging	6
Derrynane House*	13,699	Historic Sites	Fee charging	n/a
Derrynane Parklands*	355,622	Natural Attractions	Free	n/a
Dingle Oceanworld	101,092	Zoos, Aquariums, Open Farms	Fee charging	8
Falconry Kerry	1,000	Zoos, Aquariums, Open Farms	Free	3
Gallarus Castle and Oratory*	34,077	Historic Sites	Free	n/a
Kells Bay Gardens	20,000	Visitor Gardens	Fee charging	5
Kerry Bog Village Museum	4,000	Museums/Galleries	Fee charging	7
Killarney National Park	18,262	Natural Attractions	Free	8
Muckross House and Traditional Farms	76,464	Historic Sites	Fee charging	8
Muckross House Gardens and Grounds	519,464	Historic Sites	Free	n/a
Ross Castle*	5,267	Historic Sites	Fee charging	n/a
Skellig Michael*	12,105	Historic Sites	Free	n/a
Skellig Six18 Distillery	3,414	Brand Experiences	Fee charging	7
Tarbert Bridewell Visitor Centre	800	Visitor / Heritage Centres	Free	7
The Skellig Experience	7,328	Visitor / Heritage Centres	Fee charging	6
Tralee Bay Wetlands Centre	329,000	Natural Attractions	Fee charging	5
Valentia Island Lighthouse	4,000	Historic Sites	Free	3

2021 Attendances by County

KILDARE

Attraction	2021	Category	Type of admission	No. of months open in 2021
Athy Heritage Centre	732	Visitor / Heritage Centres	Fee charging	6
Burton House	21,900	Visitor Gardens	Fee charging	9
Castletown House*	34,569	Historic Sites	Fee charging	n/a
Castletown House Parklands*	1,070,673	Natural Attractions	Free	n/a
Irish National Stud & Japanese Gardens	130,899	Visitor Gardens	Fee charging	9
Kildare Town Heritage Centre	2,803	Visitor / Heritage Centres	Free	7
Lullymore Heritage and Discovery Park	31,950	Heritage Parks, Leisure & Theme Parks	Fee charging	8
Newbridge Silverware	218,993	Brand Experiences	Free	9

KILKENNY

Attraction	2021	Category	Type of admission	No. of months open in 2021
Jerpoint Abbey*	13,416	Historic Sites	Fee charging	n/a
Jerpoint Park	1,351	Visitor Gardens	Fee charging	5
Kells Priory*	57,800	Historic Sites	Free	n/a
Kilkenny Castle*	141,328	Historic Sites	Fee charging	n/a
Kilkenny Castle Parklands*	900,000	Natural Attractions	Free	n/a
Medieval Mile Museum	10,384	Museums/Galleries	Fee charging	7
Nore Valley Park	14,000	Zoos, Aquariums, Open Farms	Fee charging	4
Rothe House & Garden	10,000	Historic Sites	Fee charging	7
Shankill Castle	4,650	Historic Sites	Fee charging	8
St. Canice's Cathedral	16,364	Historic Sites	Fee charging	7
Woodstock Estate & Arboretum	35,000	Visitor Gardens	Fee charging	12

2021 Attendances by County

LAOIS

Attraction	2021	Category	Type of admission	No. of months open in 2021
Abbeyleix Heritage House	285	Historic Sites	Fee charging	7
Donaghmore Workhouse Museum	1,500	Historic Sites	Fee charging	7
Emo Court House*	582	Historic Sites	Fee charging	n/a
Emo Court Parklands*	379,161	Natural Attractions	Free	n/a
Gash Gardens	1,000	Visitor Gardens	Fee charging	5
Rock of Dunamase*	47,244	Historic Sites	Free	n/a
Timahoe Round Tower & Heritage Centre	2,500	Visitor / Heritage Centres	Free	8

LEITRIM

Attraction	2021	Category	Type of admission	No. of months open in 2021
Parke's Castle*	15,902	Historic Sites	Fee charging	n/a
Rainbow Ballroom of Romance	476	Visitor / Heritage Centres	Fee charging	7
The Organic Centre	1,600	Zoos, Aquariums, Open Farms	Free	9
The Shed Distillery, Drumshanbo	12,500	Brand Experiences	Fee charging	8

2021 Attendances by County

LIMERICK

Attraction	2021	Category	Type of admission	No. of months open in 2021
Adare Desmond Castle	31,767	Historic Sites	Free	7
Askeaton Castle*	359	Historic Sites	Fee charging	n/a
Celtic Eco Park	600	Visitor / Heritage Centres	Free	12
Curraghchase Forest Park	100,000	Natural Attractions	Fee charging	12
Desmond Hall*	19,426	Historic Sites	Free	n/a
Foynes Flying Boat Maritime Museum	12,473	Museums/Galleries	Fee charging	5
King John's Castle	34,035	Historic Sites	Fee charging	1
Limerick City Gallery of Art	17,580	Museums/Galleries	Free	8
Limerick City Museum	8,546	Museums/Galleries	Free	8
Lough Gur Visitor Centre	102,000	Historic Sites	Fee charging	n/a
Saint Mary's Cathedral	1,000	Historic Sites	Fee charging	12
The Hunt Museum	30,095	Museums/Galleries	Fee charging	7

LONGFORD

Attraction	2021	Category	Type of admission	No. of months open in 2021
Corlea Trackway Visitor Centre*	10,203	Historic Sites	Free	n/a
Knights and Conquests Heritage Centre	1,760	Visitor / Heritage Centres	Fee charging	8
Lough Ree Distillery	160	Brand Experiences	Free	4
Maria Edgeworth Centre	398	Visitor / Heritage Centres	Fee charging	8

2021 Attendances by County

LOUTH

Attraction	2021	Category	Type of admission	No. of months open in 2021
Drogheda Tholsel	1,665	Historic Sites	Free	8
Mellifont Abbey*	14,715	Historic Sites	Fee charging	n/a
Millmount Museum & Martello Tower	2,457	Museums/Galleries	Fee charging	8

MAYO

Attraction	2021	Category	Type of admission	No. of months open in 2021
Achill Experience	22,424	Zoos, Aquariums, Open Farms	Fee charging	8
Ballinglen Museum of Art	5,591	Museums/Galleries	Free	7
Ballintubber Abbey	1,100	Historic Sites	Fee charging	5
Blacksod Lighthouse	2,000	Historic Sites	Fee charging	4
Céide Fields*	24,176	Historic Sites	Fee charging	n/a
Downpatrick Head -Cliffs	60,733	Natural Attractions	Free	12
Foxford Woollen Mills Visitor Centre & Factory Tour	100,000	Brand Experiences	Free	7
Glen Keen Sheep Farm & Visitor Attraction	700	Zoos, Aquariums, Open Farms	Fee charging	3
Jackie Clarke Collection	9,015	Visitor / Heritage Centres	Free	8
Knock Museum	10,225	Museums/Galleries	Free	7
Michael Davitt Museum	1,757	Museums/Galleries	Fee charging	8
National Museum of Ireland - Country Life, Turlough Park	37,465	Museums/Galleries	Free	n/a
Old Irish Goat Centre	2,240	Zoos, Aquariums, Open Farms	Free	8
Westport House	121,790	Historic Sites	Fee charging	6
Wild Nephin National Park	12,975	Natural Attractions	Free	5

2021 Attendances by County



MEATH

Attraction	2021	Category	Type of admission	No. of months open in 2021
Battle of the Boyne/Oldbridge Estate*	509,876	Historic Sites	Fee charging	n/a
Bru na Boinne (incl. Newgrange & Knowth)*	30,119	Visitor / Heritage Centres	Fee charging	n/a
Bru na Boinne Dowth*	15,459	Historic Sites	Free	n/a
Francis Ledwidge Cottage Museum	1,100	Museums/Galleries	Fee charging	6
Hill of Tara Grounds*	182,781	Historic Sites	Free	n/a
Hill of Tara Visitor Centre*	5,091	Visitor / Heritage Centres	Fee charging	n/a
Kells Courthouse Tourism and Culture Centre	927	Visitor / Heritage Centres	Free	7
Loughcrew Gardens*	13,810	Visitor Gardens	Free	n/a
Tayto Park	620,000	Heritage Parks, Leisure & Theme Parks	Fee charging	8
Trim Castle*	56,315	Historic Sites	Fee charging	n/a

MONAGHAN

Attraction	2021	Category	Type of admission	No. of months open in 2021
Brehon Brewhouse	300	Brand Experiences	Fee charging	4
Carrickmacross Lace Gallery	1,942	Brand Experiences	Free	8
Carrickmacross Workhouse	500	Historic Sites	Fee charging	9
Monaghan County Museum	3,589	Museums/Galleries	Free	8
Patrick Kavanagh Centre	2,056	Visitor / Heritage Centres	Fee charging	8

2021 Attendances by County

OFFALY

Attraction	2021	Category	Type of admission	No. of months open in 2021
Birr Castle Gardens and Science Centre	111,000	Historic Sites	Fee charging	12
Clonmacnoise*	43,325	Historic Sites	Fee charging	n/a
Durrow Abbey*	322	Historic Sites	Fee charging	n/a
Lough Boora Discovery Park	75,170	Natural Attractions	Fee charging	12

ROSCOMMON

Attraction	2021	Category	Type of admission	No. of months open in 2021
Arigna Mining Experience	8,763	Historic Sites	Fee charging	5
Boyle Abbey*	8,325	Historic Sites	Fee charging	n/a
Derryglad Folk and Heritage Museum	1,300	Visitor / Heritage Centres	Fee charging	3
Dr. Douglas Hyde Interpretive Centre	1,500	Visitor / Heritage Centres	Free	3
Drum Heritage Centre	80	Visitor / Heritage Centres	Free	8
Glendeer Pet Farm	15,000	Zoos, Aquariums, Open Farms	Fee charging	5
Rathcroghan Visitor Centre	13,346	Historic Sites	Fee charging	8
Shannonbridge Fort	4,500	Historic Sites	Free	4

2021 Attendances by County

SLIGO

Attraction	2021	Category	Type of admission	No. of months open in 2021
Carrowmore*	13,253	Historic Sites	Fee charging	n/a
Coleman Irish Music Centre	8,081	Visitor / Heritage Centres	Fee charging	8
Eagles Flying - Irish Raptor Research Centre	20,000	Zoos, Aquariums, Open Farms	Fee charging	5
Sligo Folk Park	3,500	Heritage Parks, Leisure & Theme Parks	Fee charging	7
Spanish Armada visitor centre	181	Visitor / Heritage Centres	Fee charging	2
The Model, Home of the Niland Collection	82,608	Museums/Galleries	Free	6
Yeats Society Sligo - Yeats Building	1,100	Historic Sites	Fee charging	5

TIPPERARY

Attraction	2021	Category	Type of admission	No. of months open in 2021
Cahir Castle*	34,959	Historic Sites	Fee charging	n/a
Famine Warehouse 1848*	150	Historic Sites	Free	n/a
Hore Abbey*	47,069	Historic Sites	Free	n/a
Main Guard*	2,598	Historic Sites	Free	n/a
Mitchelstown Cave	8,000	Natural Attractions	Fee charging	7
Ormond Castle*	3,871	Historic Sites	Fee charging	n/a
Rock of Cashel*	103,003	Historic Sites	Fee charging	n/a
Roscrea Heritage Centre Grounds*	1,380	Visitor / Heritage Centres	Free	n/a
Slieveardagh Heritage Centre	195	Visitor / Heritage Centres	Free	7
Swiss Cottage*	9,277	Historic Sites	Fee charging	n/a

2021 Attendances by County

WATERFORD

Attraction	2021	Category	Type of admission	No. of months open in 2021
Bishop's Palace (Waterford Treasures Museums)	9,617	Museums/Galleries	Fee charging	8
Curraghmore House & Gardens and Shell House	1,000	Historic Sites	Fee charging	3
Dungarvan Castle*	12,931	Historic Sites	Free	n/a
Greyfriars Municipal Gallery	1,201	Museums/Galleries	Free	8
Irish Silver Museum (Waterford Treasures Museums)	6,392	Visitor / Heritage Centres	Fee charging	8
King of Vikings VR Adventure (Waterford Treasures Museums)	4,863	Visitor / Heritage Centres	Fee charging	8
Lafcadio Hearn Japanese Gardens	30,000	Visitor Gardens	Fee charging	10
Lismore Heritage Centre	7,343	Visitor / Heritage Centres	Fee charging	7
Medieval Museum (Waterford Treasures Museums)	15,045	Museums/Galleries	Fee charging	8
National Museum of Time (Waterford Treasures Museums)	13,708	Visitor / Heritage Centres	Fee charging	7
The House of Waterford Crystal	28,868	Brand Experiences	Fee charging	8
Tourin House	40	Visitor Gardens	Fee charging	1
Waterford and Suir Valley Railway	25,830	Heritage Parks, Leisure & Theme Parks	Fee charging	7

WESTMEATH

Attraction	2021	Category	Type of admission	No. of months open in 2021
Belvedere House Gardens and Park	89,000	Historic Sites	Fee charging	9
Dún na Sí Amenity and Heritage Park Moate	8,500	Heritage Parks, Leisure & Theme Parks	Fee charging	7
Kilbeggan Distillery Experience	10,800	Brand Experiences	Fee charging	7
The Hill of Uisneach	6,000	Historic Sites	Fee charging	7

2021 Attendances by County

WEXFORD

Attraction	2021	Category	Type of admission	No. of months open in 2021
Colclough Walled Garden	15,967	Visitor Gardens	Fee charging	10
Dunbrody Famine Ship	11,706	Historic Sites	Fee charging	7
Enniscorthy Castle	1,971	Historic Sites	Fee charging	7
Ferns Castle*	2,410	Historic Sites	Free	n/a
Hook Lighthouse	121,000	Historic Sites	Fee charging	8
Irish National Heritage Park	53,534	Heritage Parks, Leisure & Theme Parks	Fee charging	8
Johnstown Castle Estate, Museum & Gardens	250,000	Museums/Galleries	Fee charging	12
Kennedy Homestead	5,741	Historic Sites	Fee charging	7
Kia Ora Mini Farm	52,000	Zoos, Aquariums, Open Farms	Fee charging	6
Kilmokea Gardens	7,500	Visitor Gardens	Fee charging	5
The JFK Memorial Park and Arboretum*	143,707	Visitor Gardens	Fee charging	n/a
Tintern Abbey*	33,957	Historic Sites	Fee charging	n/a
Wells House & Gardens	117,678	Historic Sites	Fee charging	n/a

WICKLOW

Attraction	2021	Category	Type of admission	No. of months open in 2021
Glendalough Monument & Site*	318,600	Historic Sites	Free	n/a
Killruddery House & Gardens	91,607	Historic Sites	Fee charging	n/a
Kilmacurragh Gardens*	105,000	Visitor Gardens	Free	n/a
National Sealife Centre	83,700	Zoos, Aquariums, Open Farms	Fee charging	8
Powerscourt Distillery	2,028	Brand Experiences	Fee charging	3
Powerscourt House, Gardens & Waterfall	363,587	Historic Sites	Fee charging	12
Russborough House & Parklands	143,000	Historic Sites	Fee charging	12
Wicklow's Historic Gaol	13,334	Historic Sites	Fee charging	3